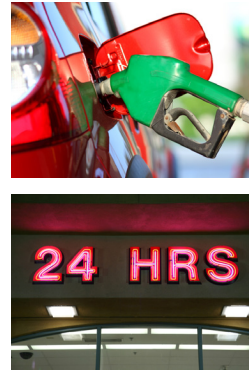
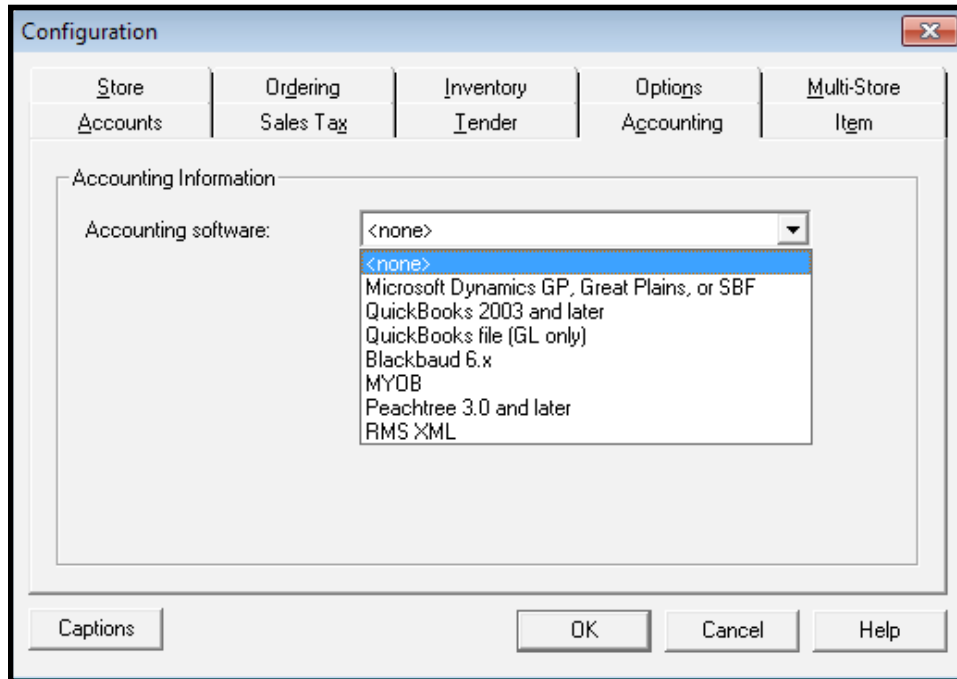


Accounting

- Integration to QuickBooks, Microsoft's Great Plains, & Peachtree Accounting
- Exports in industry standard file format for other third party accounting packages



Convenience

Tobacco Outlets

Convenience Stores

Gas Stations

Age Verification

- Simple interface
- Compatible with all state issued ID
- Log file for viewing scans
- Indicator for 18 and over
- Indicator for 21 and over
- Uses latest state adopted universal barcode standard (PDF417)
- Can add customers to your database



Name

Birthday (MM-DD-YYYY) - -

Over 18?

Over 21?

Close

Name

Birthday (MM-DD-YYYY) - -

Over 18? 11/23/1938 Yes!

Over 21? 11/23/1938 Yes!

Close

Inventory Management

- Purchase orders
- Inventory transfer in & out
- Supplier management
- Inventory reporting capabilities
- Physical inventory counts
- Ready to go cigarette templates for cartons and packs
- Ready for alcohol sales
- Control ordering of multiple pack items

Advanced Item Support

- Standard Items
- Serialized
- Kit
- Assembly
- Non-Inventory
- Matrix
- Lot Matrix
- Voucher
- Weighed

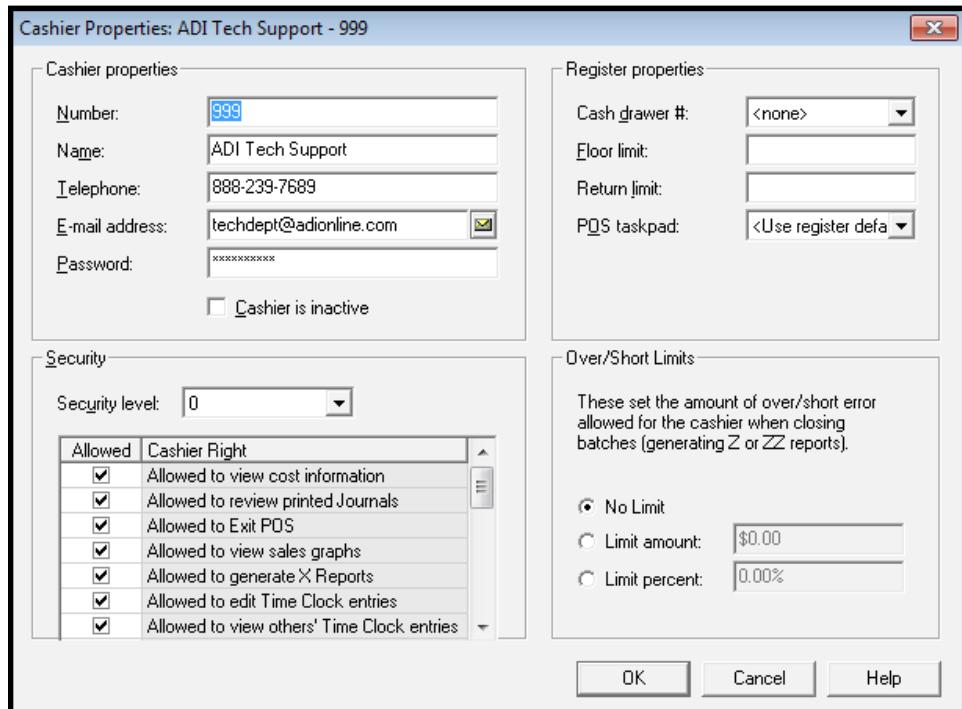
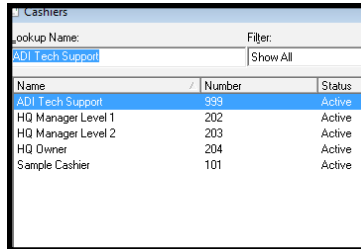
Item Properties: New Item -

Voucher	Substitutes	Special	Serial	Kit	Options
General	Inventory	Suppliers	Pricing	Discounts	Commission
Item lookup code: <input type="text"/>	Item type: <input type="text" value="Standard"/>				
Description: <input type="text" value="New Item"/>	Member of: <input type="text" value="Type"/> <input type="text" value="Item Lookup Code"/>				
Extended description: <input type="text"/>	Department: <input type="text" value="<None>"/>				
Sub Description 1: <input type="text"/>	Category: <input type="text" value="<None>"/>				
Sub Description 2: <input type="text"/>	Item tag: <input type="text" value="PA Sales Tax"/>				
Sub Description 3: <input type="text"/>	Barcode: <input type="text" value="NONE"/>	Price: <input type="text" value="\$0.00"/>			
		Cost: <input type="text" value="\$0.00"/>			
		Profit Margin: <input type="text" value="N/A"/>			

Labels Movement

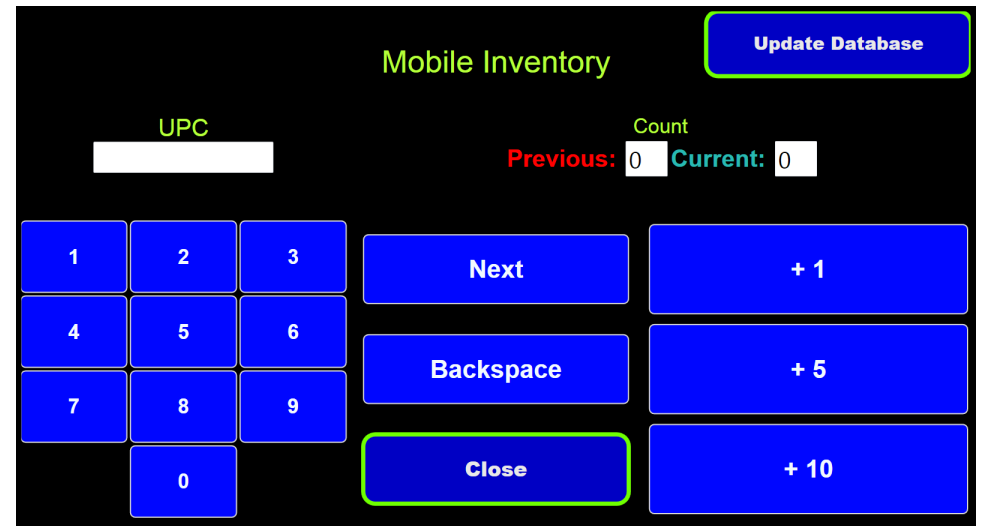
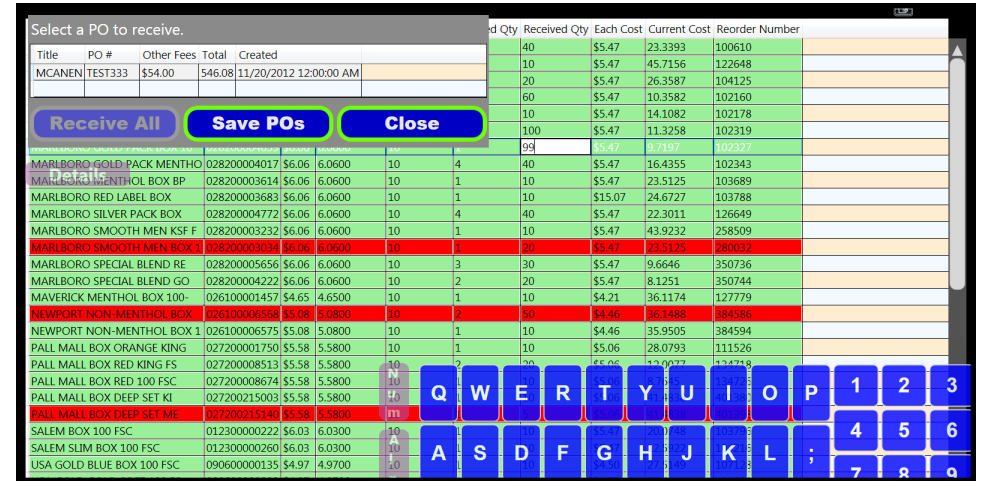
Advanced Security

- Time clock entries
- Ability to lock out cashiers
- User management
- User id & password login
- Compatible with employee cards
- Lock out users from manager functions
- Disable voids
- Reduce theft
- Camera integration available
- Internet browsing is locked out



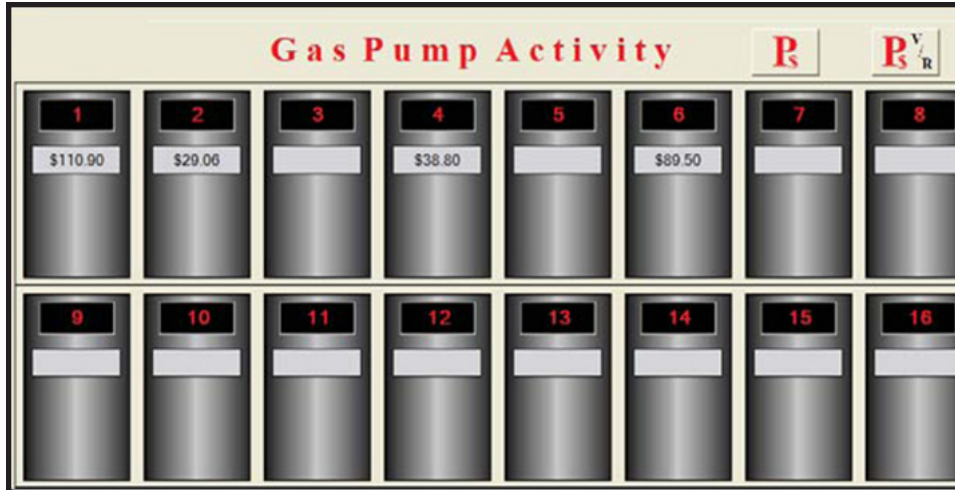
Supplier Integration

- Import and receive EDIs from multiple suppliers
- Create POs in RMS with touch interface
- Recall and create Inventories with real-time updates
- Check and edit item info (price, description)



Gas Pump Integration

- Easy access to pump transactions
- Pump activity screen
- “Always on top” pump status & authorization control
- Prepaid sales
- Run reports on refunded or voided prepaid sales
- Configurable gas tax rate
- Easy to use fuel price management
- Sends pricing directly to pumps
- Supports up to 16 fuel pumps



Remote Access

- Manage store(s) from home
- Real time price changes
- Full control as if you were at the store



Multiple Store Support

- Manage inventory across multiple stores
- Consistent settings across all locations
- Run reports across all stores
- Transfer inventory between stores
- Tax profiles based on location